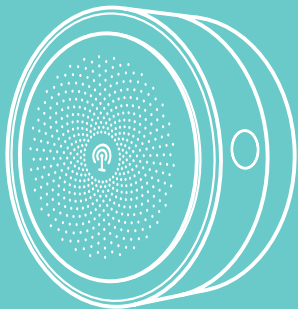


USER GUIDE

INDOOR SIREN & RF REPEATER



Untuk versi bahasa Indonesia
silahkan unduh pada website,
www.getaqila.com/download

AQILA
Rumah Lebih Aman, Lebih Pintar™

Description

INDOOR SIREN & RF REPEATER used to expand the range of sensors that use RF signals as well as amplifying alarm sounds in the room. It has an elegant design and is easy to install. This device is needed when a wider RF signal coverage is required, better stability, higher sensitivity, a wider transmission distance, with no interference.

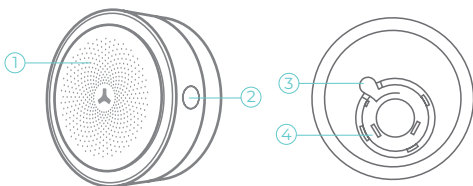
Note

Buildings that may require this device are those with more than 1 floor or an area of more than 200m².

Features

- Extends the signal range of the wireless sensor.
- Receive alarms, status and information from sensors and forward them to Aqila Securehub™.
- LED lights in 3 different colors indicate the alarm status to activate or deactivate the alarm.
- One button to turn the LED indicator on and off.
- Battery backup for 12 hours in the event of a power loss.

General Display / LED indication



1. LED indicator
Red LED blink once: Connection Process
Green LED is on: System is Disarmed
Green LED flashes once: transmits signal
Blue LED lights up: System is protected in Away Arm mode
Blinking blue LED: System is protected in Stay Arm mode
2. Connection / Test button
3. Electric plug release button
4. Electric plug

Spesifikasi

Voltage: DC100-240V 50/60 HZ
Maximum Current: 20 mA/220V
Power Rating: $\leq 5W$ (220V)
Battery Backup: 3.7V/600mA
Receiving Distance: 100M

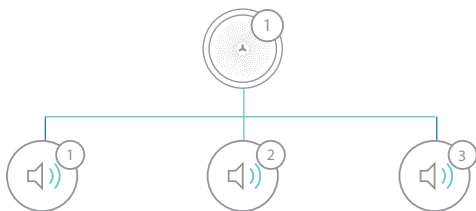
Transmission Distance: 500M
Housing Material: Plastik ABS
Power Plug Type: EU
Operating conditions: $-10^{\circ}C-55^{\circ}C$
Size: $\phi 80 \times 41.7$ mm

Operation Button

Function	Operation	Status
Turn on Device	Press and hold the Connection button for 3 seconds	The device beeps once, the LED indicator turns green
Turn on Device	Press the Connection button 10 times	The device beeps once, the LED indicator will turn off
Turns On / Off the LED Indicator	Press the Connection Button 5 times	The device beeps once, the LED indicator will turn off / on
Connection Mode to connect to AQILA Securehub™ and sensors	When it turned On, press the connection button 1 time	The device beeps once, the LED indicator turns red
Removes connection from AQILA Securehub™ and sensor	Press and hold the Connection button for 5 seconds	Sensors beeps once
Turning On / Off Alarm Sounds	Press the Connection button 3 times	Sensors beep once, the LED indicator turns off / on

Connection

- Press the connection button, you will hear a beep 1 time, and the LED light will turn red which means the device has entered "Connection Mode" and is ready to connect Aqila Securehub™ or the sensor (Press the Connection button again within 30 seconds to exit connection mode).
- To connect the Aqila Securehub™, enter "Connection Mode", then press the white tamper button on the back of the Aqila Securehub™.
- To connect a sensor, enter "Connection Mode", then connect the sensor by triggering the sensor, for example: press any button on the remote control, or separate the transmitter and magnet on the door & window sensor.



Aqila Securehub™ beeps once and the LED indicator blinks once, it means connection process has been successful.

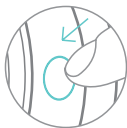
If Aqila Securehub™ beeps 2 times and the LED indicator blinks once, it means that the sensor has been connected before.

If Aqila Securehub™ beeps 3 times and the LED indicator blinks once, it means that the connection capacity to Aqila Securehub™ is full (up to 50 sensors).

Note

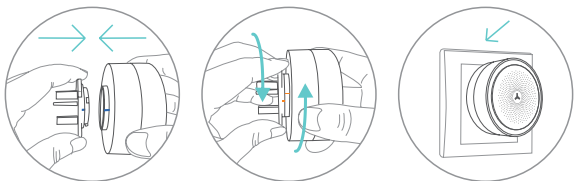
- To extend the sensor range, all sensors which will be connected to Indoor Siren & RF Repeater must first be connected to the Aqila Securehub™.
- Once the Indoor Siren & RF Repeater is connected to Aqila Securehub™, the Indoor Siren & RF Repeater device will not appear in Aqila Smart Apps like other sensors. **THIS IS NORMAL.**

Removing Connection to Aqila Securehub™ or sensors.



Press and hold the Connection button for 5 seconds until a beep is heard. All previously made connections will be deleted.

Installation



Install the electric plug on the device correctly by turning it. Then turn the device on.

Notice

The battery back-up is only for emergency use, AC power should still be the main power supply.

Siren function must be tested periodically, so that any errors that may arise can be identified.

Do not install the device less than 1.2 m in height.