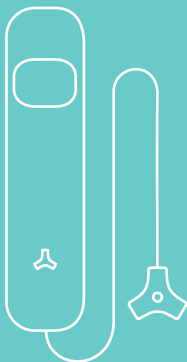


USER GUIDE

WATER LEAKAGE SENSOR



Untuk versi bahasa Indonesia
silahkan unduh pada website,
www.getaqila.com/download

AGILA
Rumah Lebih Aman, Lebih Pintar™

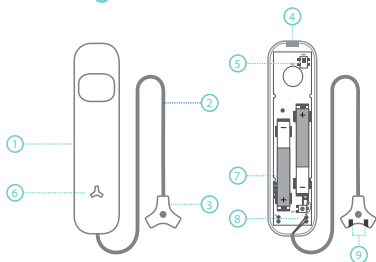
Water leakage sensor is used to detect large leaks and detect flooding when water enters the house area at an unexpected time. Designed with low power consumption, this sensor has a high level of accuracy and sensitivity, has a good ability to receive signals, and has high stability. This sensor detects water from changes in resistance to the electrodes and the MCU processor. This sensor is generally used in living rooms, dining rooms, kitchens, garages, and other locations where the presence of water must be avoided.

- Elegant design and easy to install.
- Low power usage.
- The battery is durable and easy to replace.
- Has high sensitivity, fast response, and low false alarm rate.
- An alarm will be triggered when the water volume reaches a certain height (according to the installation of the sensor tip).
- Protection against tampering and notification when battery power is low.

Specifications:

Battery Type:	DC 3V (2pcs .5V/AAAA)
Standby Current:	SS-F01: $\leq 20\mu\text{A}$ SS-F01 PLUS: $\leq 22\mu\text{A}$
Alarm Current:	SS-F01: $\leq 26\text{mA}$ SS-F01 PLUS : $\leq 30\text{mA}$
RFI Features:	25V/m (10Mhz-1Ghz)
Temperature:	-20°C-55°C
Humidity:	$\leq 80\%$ (no condensation)
Transmitter Dimensions:	(L*W*H): 21*90*18 mm
Sensor Dimension:	(L*W*H): 35*31*10 mm
Cable Length:	95 cm

Working Status:



- | | | | |
|----|---------------------|----|---------------------|
| 1. | Transmitter | 6. | Alarm Indicator |
| 2. | Leak Detector Cable | 7. | Battery Compartment |
| 3. | Sensor | 8. | Sensor Terminal |
| 4. | Clip | 9. | Polarity Sensor |
| 5. | Tamper Switch | | |

LED indicator:

The light blink once every 3 seconds: The battery is low, please replace the battery immediately (AAAA LR61)

LED flashes once every 1 sec: Detect alarm / alarm tamper triggered.

Tamper Switch:

If the sensor box is opened, a tamper alarm will be triggered.

Connecting to Aqila Securehub™:



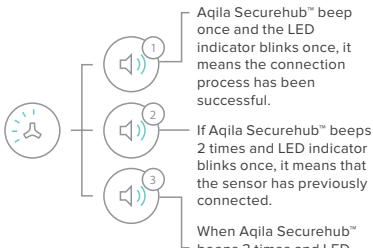
Press the Connection button on the Aqila Securehub™ to enter Connection Mode, then the LED light will turn red (Press the Connection button again in 20 seconds to exit Connection Mode).



Put the sensor tip into the water to trigger the alarm (Sensor that has been connected will be set the 24-hour zone as default).

The sensor can also be connected to AqilaSecurehub™ via the Aqila Smart App with the following steps:

1. In the Aqila Smart App, go to Aqila Securehub™
2. Select “sensor”
3. Select “add” in the application and follow the instructions.
4. Then press “x” to exit the connection mode.



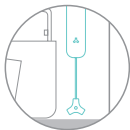
Note:

Please do not use tamper switch to perform the connection.

(Note! Please do not use tamper switch to register. Also do not perform connection battery level is low)

Testing and Installation:

After the battery is installed, the LED indicator will light up for 1 second. The sensor will trigger an alarm when it detects water.



Place the tip of the sensor in the area to be monitored at a distance of 1-2mm from the floor.

The sensor **MUST NOT** touch the floor surface.



Once the sensor is in the right position, use adhesive double tape to attach the main / transmitter unit to a clean, dry wall surface.

Attach the tip of the sensor with screws or adhesive double tape so that its position does not change.

Avoid installing the sensor in areas with a lot of metals and power cables.

Operation Instructions:



When water detected, the LED indicator will light up and immediately send a signal to Aqila Securehub™, then an alarm will be triggered, and a notification will be sent via Apps, SMS or phone calls.



Once the monitored area is dry and free from water, the sensor will return to standby mode.

Alarm Management:

When the alarm triggered, you must immediately resolve the situation by:

- Turn off the water tap and check the plumbing for any leakage.
- Check house roof if there is any leak occurs.
- Drain any water in the monitored area.
- If the alarm triggered due to a flood that has entered the monitored area, immediately secure your valuables before the flood gets higher.

Installation

Notes:

- The sensor is recommended to be installed in areas that have the potential to experience leakage / flooding.
- Do not install in areas which exposed by rain, smoke, and steam.
- Do not install sensors in areas that are always wet, such as bathrooms, as this will causing false alarm.

Notice:

- If the sensor still triggers alarm after the leak / flood situation is resolved, it may be because there is still water left in the sensor. Solve this problem by cleaning the sensor surface.
- If after cleaning the sensor still triggers the alarm, remove the sensor tip and shake the sensor cable until its dry and then plug it back in.
- For the sensor to work properly, replace the battery immediately.
- Ensure that the sensor surface is not dirty as this can affect the effectiveness and sensitivity of the sensor.
- To keep the sensor performance well, clean the sensor surface periodically using a soft brush.
- Install the sensor according to the instructions in the user manual.

www.getaqila.com